



Center for Psychiatric Rehabilitation



---

***In this edition of the eCast (September 2021)***

- Ask Me Anything Webinar Announcement
- Vocational Recovery: Meaningful Work
- Finding Us On YouTube
- Recent Publications By CPR Faculty and Staff

---

***Ask Me Anything About Employment!***

***An Interactive Webinar That's Better With You***



You're invited to ask an expert about another interesting topic related to employment! This *free* event is not a presentation, but rather an interactive question & answer webinar. And *YOU* provide the questions.

**Join us on Monday, September 27th at 12:00 PM EDT until 1:00 PM EDT**

**Ask Me Anything About Disclosure and Accommodations with  
guest expert Melanie Whetzel, M.A., CBIS**

Melanie joined the Job Accommodation Network (JAN) staff as a consultant on the Cognitive / Neurological Team in February 2008. She has a fourteen-year history of teaching and advocating for students with disabilities in the public school system. As a member of the Cognitive / Neurological Team, Melanie specializes in learning disabilities, mental impairments, developmental disabilities, autism spectrum disorders, and brain injuries. She presents nationally on topics ranging from mental health impairments to conduct and performance issues, learning disabilities, attention deficit hyperactivity disorder, brain injuries, and more. Melanie became a certified brain injury specialist in December 2014 and completed a graduate certification in Career Planning and Placement for Youth in Transition.

**Registration:**

<https://www.eventbrite.com/e/ask-me-anything-about-employment-disclosure-and-accommodationstickets-158114136639>

**Submit webinar questions before the webinar to**

**Gretchen Grappone, LICSW, at [grappone@bu.edu](mailto:grappone@bu.edu)**

**Tech Requirements:**

The webinar will be conducted through Zoom. Once you complete the registration process you will receive an e-mail with the Zoom link to join the webinar. If you do not have the Zoom app installed on your computer, tablet, or smartphone please allow for a few minutes before the beginning of the webinar to follow all the instructions. We will begin on time.

**Accommodation Requests:**

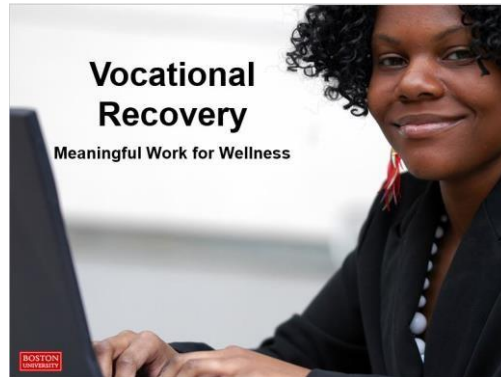
Boston University provides reasonable accommodation upon request. Please send an email to [grappone@bu.edu](mailto:grappone@bu.edu) 14 days prior to the event with the specific accommodations you require. If less than 14 days remain until the event, please submit your request the same day you register, or as soon as possible, so we can make every effort to accommodate you.

---

***Introducing a new training tool to  
support meaningful work for wellness***

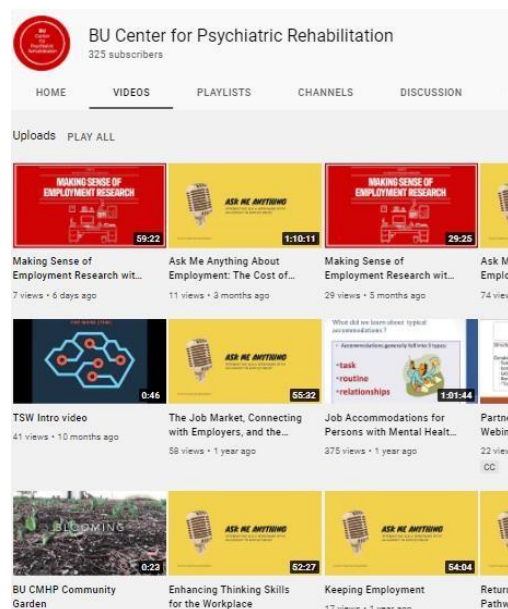
An adaptable tool in the form of a PDF slide show is introducing meaningful work as a necessary component of vocational recovery. This easy-to-use training tool allows everyone from program managers to supported employment specialists to peer providers to prepare for inviting participants into the exploration of employment as a tool for wellness. Utilizing data and personal stories, staff and participants can develop understanding and a game plan for placing meaningful work as an important principle for vocational recovery.

This tool brings together the research and training utilized as a part of a National Institute on Disability Independent Living and Rehabilitation Research (NIDILRR) grant #90RT5029. (CoInvestigators: Marianne Farkas, Sally Rogers.)



Multiple programs across the country utilized distance training and consultation to strengthen supported employment (SE) services. Each program then developed a plan and these plans culminated in this slide show which can now be accessed by SE programs across the country.

## *Did you know we're on YouTube?*



Have you missed a webinar or training? Are you curious about what videos we make available? Well then, you should subscribe, like, and sign up for our notifications on [YouTube](#). There are a large variety of videos; webinars from our "Ask Me Anything" and "Making Sense of Research" series, first-person stories on Vocational Recovery, and keynotes and pieces of training from various events. Remember to leave comments about the content and recommendations for new pieces you would like to see. *We hope to see you there!*

---

The Center faculty, researchers, and staff are a prolific group of people. Contributing to the field while maintaining the principles of recovery is a primary goal of the grants and projects undertaken. Below is a listing of research articles published during the first half of 2021. Authors who are affiliated with CPR are indicated in **bold** type. Also, note that a record of publications is maintained under [Articles, Books, Etc](#) within the Resources and Information section of the [Center's website](#). Where possible, links are provided to the specific publication or additional information. **Interventions**

Rehabilitation Readiness

**Vax, S., Farkas, M., Russinova, Z., Mueser, K. T., &** Drainoni, M. L. (2021). Enhancing organizational readiness for implementation: Constructing a typology of readiness-development strategies using a modified Delphi process. *Implementation Science, 16*:61.

<https://doi.org/10.1186/s13012-021-01132-0>

**Vax, S.,** Gidugu, V., **Farkas, M.** & Drainoni, M-L. (2021). Ready to roll: Strategies and actions to enhance organizational readiness for implementation in community mental health. *Implementation Research and Practice, 2*. <https://doi.org/10.1177/2633489520988254>

Cognitive Remediation / Cognitive Behavioral Therapy

**McGurk, S. R., & Mueser, K. T.** (2021). *Cognitive remediation for successful employment and psychiatric recovery: The thinking skills for work program*. New York, NY: Guilford Press.

**McGurk, S. R.,** Otto, M. W., Fulford, D., Cutler, Z., **Mulcahy, L. P.,** Talluri, S. S., Qiu, W. Q., Gan, Q., Tran, I., Turner, L., DeTore, N., R., Zawacki, S. A., Khare, C., Pillai, A., & **Mueser, K. T.** (2021). A randomized controlled trial of exercise on augmenting the effects of cognitive remediation in persons with severe mental illness. *Journal of Psychiatric Research, 139*, 38-46.

<https://doi.org/10.1016/j.jpsychires.2021.04.033>

Sommerfeld, D., Granholm, E., Holden, J., Seijo, C., Rapoport, C. S., **Mueser, K. T.,** Naqvi, J., & Aarons, G. A. (2021). Concept mapping study of stakeholder perceptions of implementation of cognitive-behavioral social skills training on assertive community treatment teams. *Psychological Services, 18*, 33-41. doi: 10.1037/ser0000335

Wright, A., **McGurk, S. R.,** Shaya, Y., Feldman, K., & **Mueser, K. T.** (2021 Ahead of Print). Does comprehensive cognitive remediation improve emotion perception? *Cognitive Neuropsychiatry*.

## Alternative Interventions

Browne, J., Cather, C., & **Mueser, K. T.** (2021). Common factors in psychotherapy. In T. Wykes (Ed.), *Oxford Research Encyclopedia of Psychology*. New York, NY: Oxford University Press. doi: <https://doi.org/10.1093/acrefore/9780190236557.013.79>

Fulford, D., Gaard, D. E., **Mueser, K. T.**, Mote, J., Gill, K., Leung, L., & Mow, J. (2021). Preliminary outcomes of the motivation and skills support (MASS) mobile app: An ecological momentary intervention for social functioning in schizophrenia. *JMIR Mental Health*, 8, e27475. doi: 10.2196/27475

Kramer, J. M., **Schwartz, A. E.**, Davies, D. K., Stock, S., & Ni, P. (2021). Usability and reliability of an accessible Patient Reported Outcome Measure (PROM) software: The PEDI-PRO. *American Journal of Occupational Therapy*, 75(1), 7501205010. <https://doi.org/10.5014/ajot.2020.040733>

## First Episode Psychosis / Young Adults

Achtyes, E. D., Kempema, K., Luo, Z., Thakkar, K. N., Adams, C., D'Mello, D., Stilwell, K., Tran, D., Marcy, P., **Mueser, K. T.**, Schooler, N. R., Robinson, D. G., & Kane, J. M. (2021). Implementation of NAVIGATE coordinated specialty care for first episode psychosis: The Michigan experience. *CNS Spectrums*, 26, 177-8.

Aschbrenner, K., Naslund, J. A., Gorin, A. A., **Mueser, K. T.**, Browne, J., Wolfe, R. S., Xie, H., & Bartels, S. J. (2021 Ahead of Print). Group lifestyle intervention with mobile health for young adults with serious mental illness: A randomized controlled trial. *Psychiatric Services*. doi: 10.1176/appi.ps.202100047

Aschbrenner, K., Naslund, J. A., Salwen-Deremer, J. K., Browne, J., Bartels-Velthuis, A. A., Wolfe, R., Xie, H., & **Mueser, K. T.** (2021 Advance Online). Sleep quality and its relationship to mental health, physical health, and health behaviors among young adults with serious mental illness enrolled in a lifestyle intervention trial. *Early Intervention in Psychiatry*. doi: 10.1111/eip.13129

Browne, J., Wright, A., Berry, K., **Mueser, K. T.**, Cather, C., Penn, D. L., & Kurtz, M. M. (2021). The alliance-outcome relationship in individual psychosocial treatment for schizophrenia and early psychosis: A meta-analysis. *Schizophrenia Research*, 231, 154-63. doi: 10.1016/j.schres.2021.04.002

DeTore, N. R., Gottlieb, J. D., & **Mueser, K. T.** (2021). Prevalence and correlates of PTSD in first episode psychosis: Findings from the RAISE-ETP study. *Psychological Services*, 18, 147-153. doi: 10.1037/ser0000380

Munsell, E.G.S. & **Schwartz, A.** (2021). Youth's experiences of the IDEA mandated transition planning process: A metasynthesis of youth voices. *Review Journal of Autism and Developmental Disorders*. doi: 10.1007/s40489-021-00268-5

**Schwartz, A.**, Kramer, J., & PEDI-PRO Youth Team. (2021). Inclusive approaches to developing content valid patient reported outcome measure response scales for youth with intellectual/developmental disabilities. *British Journal of Learning Disabilities*, 49, 100-110. doi: 10.1111/bld.12340

**Schwartz, A. E., Rogers, E. S., & Russinova, Z.** (2021). Predictors of community-based employment for young adults with intellectual disability and co-occurring mental health conditions. *Disability & Rehabilitation*. doi: 10.1080/09638288.2021.1907457

Srivastava, A., Miller, A. N., Tai, M.-H., Coles, M. S., Brigham, R., Peterson, E. R., Kreida, E., **Mueser, K. T.**, & Ng, L. C. (2021 Advance Online). Development of a primary care intervention for PTSD in adolescents. *Clinical Practice in Pediatric Psychology*. doi: 10.1037/cpp0000382

## **Employment**

Hellström, L., Pedersen, P., Christensen, T.N., Gammelgaard, I., Bojesen, A. B., Stenager, E., White, S., **Mueser, K. T.**, Bejerholm, U., Michon, H., van Busschbach, J., Reme, S. E., & Eplöv, L.F. (2021 Online). Vocational outcomes of the individual placement and support model in subgroups of diagnoses, substance abuse, and forensic conditions: A systematic review and analysis of pooled original data. *Journal of Occupational Rehabilitation*. doi: 10.1007/s10926-021-09960-z

Khare, C., **McGurk, S. R.**, Fulford, D., Watve, V. G., Karandikar, N. J., Khare, S., Karandikar, D. N., & **Mueser, K. T.** (2021). A longitudinal analysis of employment in people with severe mental illnesses in India. *Schizophrenia Research*, 228, 472-80. doi: 10.1016/j.schres.2021.01.004

Khare, C., **Mueser, K. T.**, Madhumita, B., **Vax, S.**, & **McGurk, S. R.** (2021). Employment in people with severe mental illnesses receiving public sector psychiatric services in India. *Psychiatry Research*, 296, 113673. doi: 10.1016/j.psychres.2020.113673

Maru, M., **Rogers, E. S.**, Nicoilellis, D., **Legere, L.**, Placencio-Castro, M., Magee, C., & Harbaugh, A. G. (2021, May 20). Vocational peer support for adults with psychiatric disabilities: Results of a randomized trial. *Psychiatric Rehabilitation Journal*. Advanced online publication. <http://dx.doi.org/10.1037/prj0000484>

Wallstroem, I. G., Pedersen, P., Christensen, T. N., Hellström, L., Bojesen, A. B., Stenager, E., White, S., **Mueser, K. T.**, Bejerholm, U., van Busschbach, J., & Eplöv, L. F. (2021 Ahead of Print). A systematic review of Individual Placement and Support, employment and personal and clinical recovery. *Psychiatric Services*. doi: 10.1176/appi.ps.2020.00070

## Peer Support / Personal Accounts

**Adams, W.** & Lincoln, A. (2021). Barriers and facilitators to implementing peer support for criminal justice-involved individuals. *Psychiatric Services*. <https://doi.org/10.1176/appi.ps.201900627>

**Adams, W. E., Rogers, E. S.,** Edwards, J. P., Lord, E. M., **McKnight, L.,** Barbone, M. (2021). Impact of COVID-19 on peer support specialists in the United States: Findings from a cross-sectional, online survey. *Psychiatric Services*. <https://ps.psychiatryonline.org/doi/10.1176/appi.ps.202000915>

**Schwartz, A.** & Levin, M. (2021). Feasibility of a peer mentoring program for young adults with intellectual and developmental disabilities and co-occurring mental health conditions. *British Journal of Learning Disabilities*. doi: 10.1111/bld.12396

Slade, M., Rennick-Egglestone, S., Llewellyn-Beardsley, J., Yeo, C., Roe, J., Bailey, S., Smith, R. A., Booth, S., Harrison, J., Bhogal, A., Penas Morán, P., Hui, A., Quadri, D., Robinson, C., Smuk, M., **Farkas, M.,** Davidson, L., van der Krieke, L., Slade, E., Bond, C., Nicholson, J., Grundy, A., Charles, A., Hare-Duke, L., Pollock, K., & Ng, F. (2021). Recorded mental health recovery narratives as a resource for people affected by mental health problems: Development of the Narrative Experiences Online (NEON) intervention. *JMIR Formative Research*, 5(5):e24417. doi: 10.2196/24417

## Families / Caregivers

Halstead, E. J., Stanley, J., Fiore, D., & **Mueser, K. T.** (2021). The impact of cognitive impairment in adults with multiple sclerosis (MS) and their family caregivers. *International Journal of MS Care*, 23, 93-100. doi: 10.7224/1537-2073.2019-091

Munsell, E. G. S., **Schwartz, A. E.,** Schmidt, E. K., & Chen, J. (2021). "Everything now falls on me": Parent perspectives on services lost and challenges during virtual learning for youth with disabilities. *Journal of the American Academy of Special Education Professionals*.

## Medication / Substance Use

McHugo, G. J., Drake, R. E., Haslett, W. R., Krassenbaum, S. R., **Mueser, K. T.,** Sweeney, M. A., Kline, J., & Harris, M. (2021). Algorithm-driven substance use disorder treatment for inner-city clients with serious mental illness and multiple impairments. *Journal of Nervous and Mental Disease*, 209, 92-9. doi: 10.1097/NMD.0000000000001296

## Other Topics

Greenberg, K., **Schwartz, A.,** & Kramer, J. (2021) Adoption and usage of self-reports with youth with intellectual/developmental disabilities: Contextual influences and practice patterns. *Child: Care, Health, and Development*, 47, 501-508. doi: 10.1111/cch.12862

Hamblen, J. L., & **Mueser, K. T.** (2021). *Treatment for postdisaster distress: A transdiagnostic approach*. Washington, DC: American Psychological Association.

Lincoln, A., Eyllon, M., Prener, C., Garverich, S., Griffith, J., **Adams, W.**, Arford, T., Rosenfeld, L., Nykiel, S., Johnson, P., Guyer, M., Leung, G., Paasche-Orlow, M. (2021). Prevalence and predictors of limited literacy in public mental health care. *Community Mental Health Journal*, 57, 1175-1186. <https://doi.org/10.1007/s10597-020-00750-0>

**Rogers, E. S.**, Millner, U. C., Ludlow, L., Lord, E. M., & **Russinova, Z.** (2021). Development of a comprehensive inventory of community participation for individuals with psychiatric disabilities. *Psychiatric Rehabilitation Journal*, 44(1), 51-62.

**Schwartz, A. E.**, Munsell, E. G., Schmidt, E. K., Colón-Semenza, C., Carolan, K., & Gassner, D. L. (2021). Impact of COVID-19 on services for people with disabilities and chronic health conditions. *Disability and Health Journal*, 2-7. doi: 10.1016/j.dhjo.2021.101090

Wright, A. C., Browne, J., Cather, C., Pratt, S. I., Bartels, S. J., & **Mueser, K. T.** (2021). Does self-efficacy predict functioning in older adults with schizophrenia? A cross-sectional and longitudinal mediation analysis. *Cognitive Therapy and Research*, 45, 136-8. doi: 10.1007/s10608-020-10171-8

---

## ***Follow us on all the best social media platforms!***

BOSTON UNIVERSITY  
**CENTER FOR  
PSYCHIATRIC  
REHABILITATION**

Supporting people with  
mental health conditions  
in living a meaningful life

Email: [psyrehab@bu.edu](mailto:psyrehab@bu.edu)  
Website: [cpr.bu.edu](http://cpr.bu.edu)



Twitter: [@psyrehab](https://twitter.com/psyrehab)  
Stay tuned & retweet



Instagram: [@bu\\_cpr](https://www.instagram.com/bu_cpr)  
Interact with latest updates



Facebook: [FB.com/BUCPR](https://www.facebook.com/BUCPR)  
Become inspired

